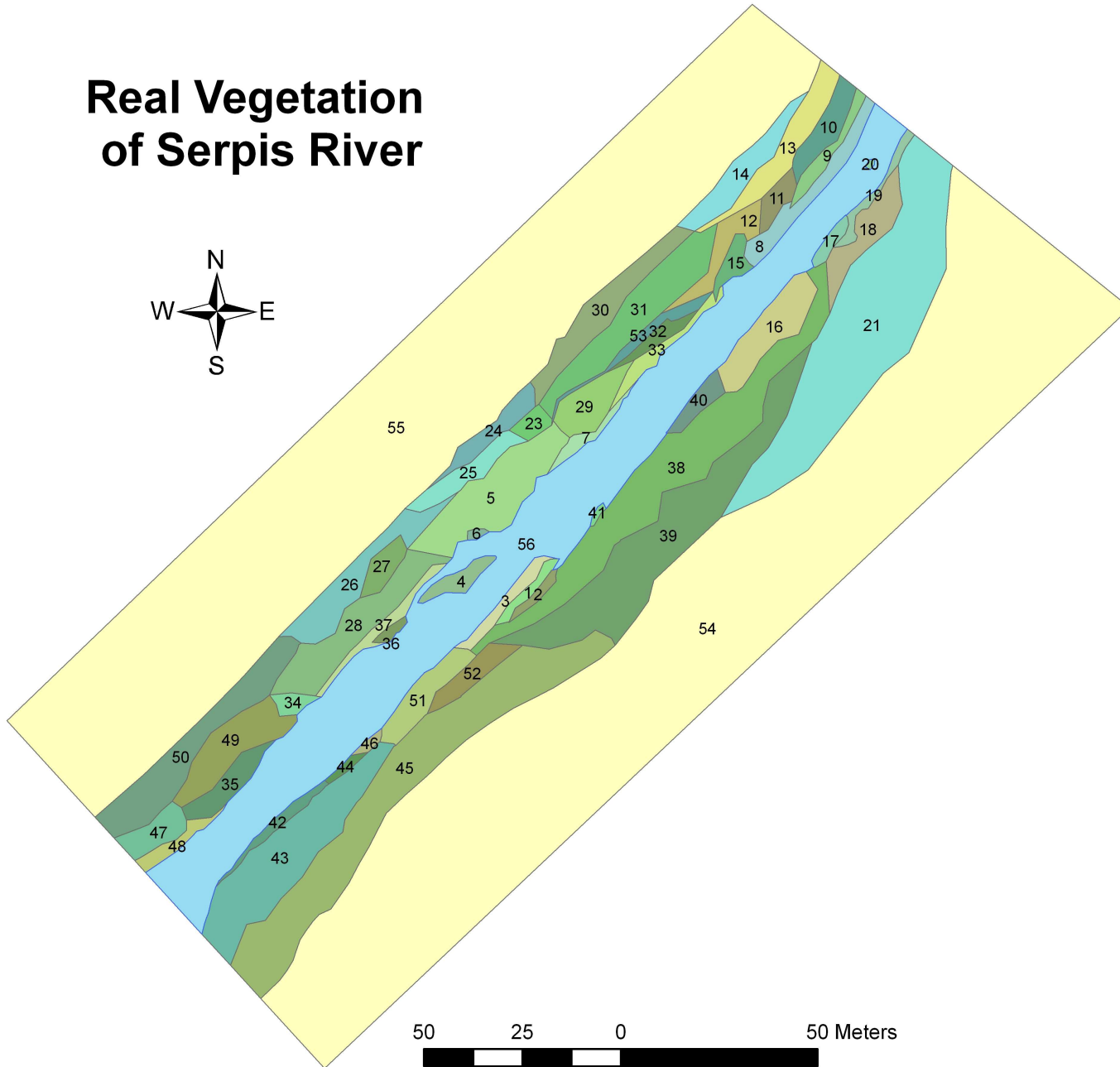


# Ripflow Project



Meeting in Klagenfurt (Austria)

# Real Vegetation of Serpis River

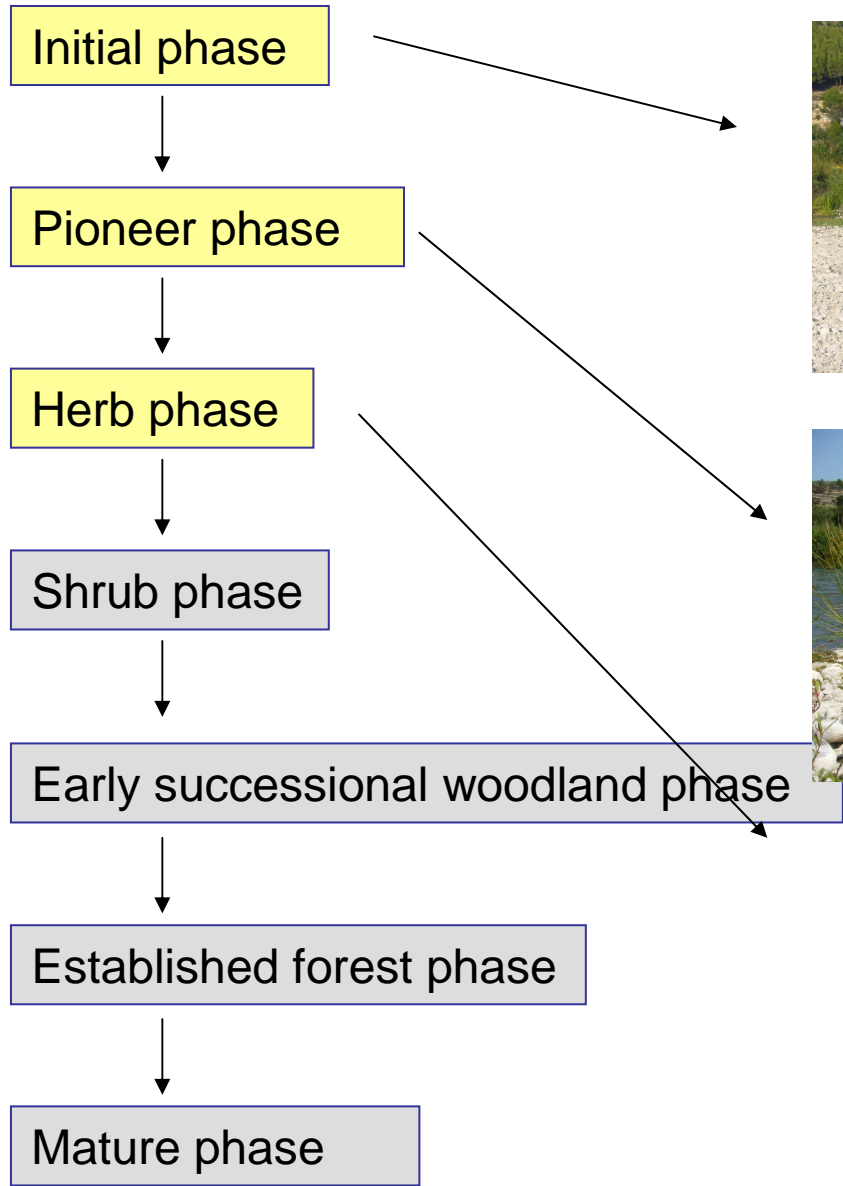


# Sampling of Reference Sites along the River Serpis

- It needs to increase the sampling size (N)
- We think there are two lines of succession, according to the abiotic factors.
  - A) final phase = *alameda* poplar forest (*Populus alba*)
  - B) final phase = *adelfar* (*Nerium oleander*)

Question: Are we going to implement two lines of succession?

**“WET” WOODLAND SERIE**



(0 years)

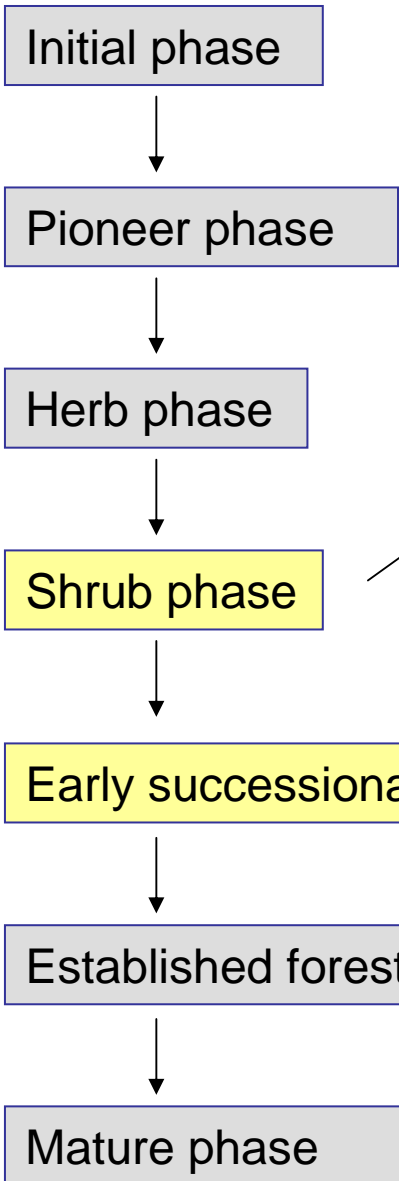


(0-1 years)



(1-3 years)

**WET WOODLAND SERIE**



(4-10 years)



(10-20 years)



**WET WOODLAND SERIE**

Initial phase



Pioneer phase



Herb phase



Shrub phase



Early successional woodland phase



Established forest phase



Mature phase

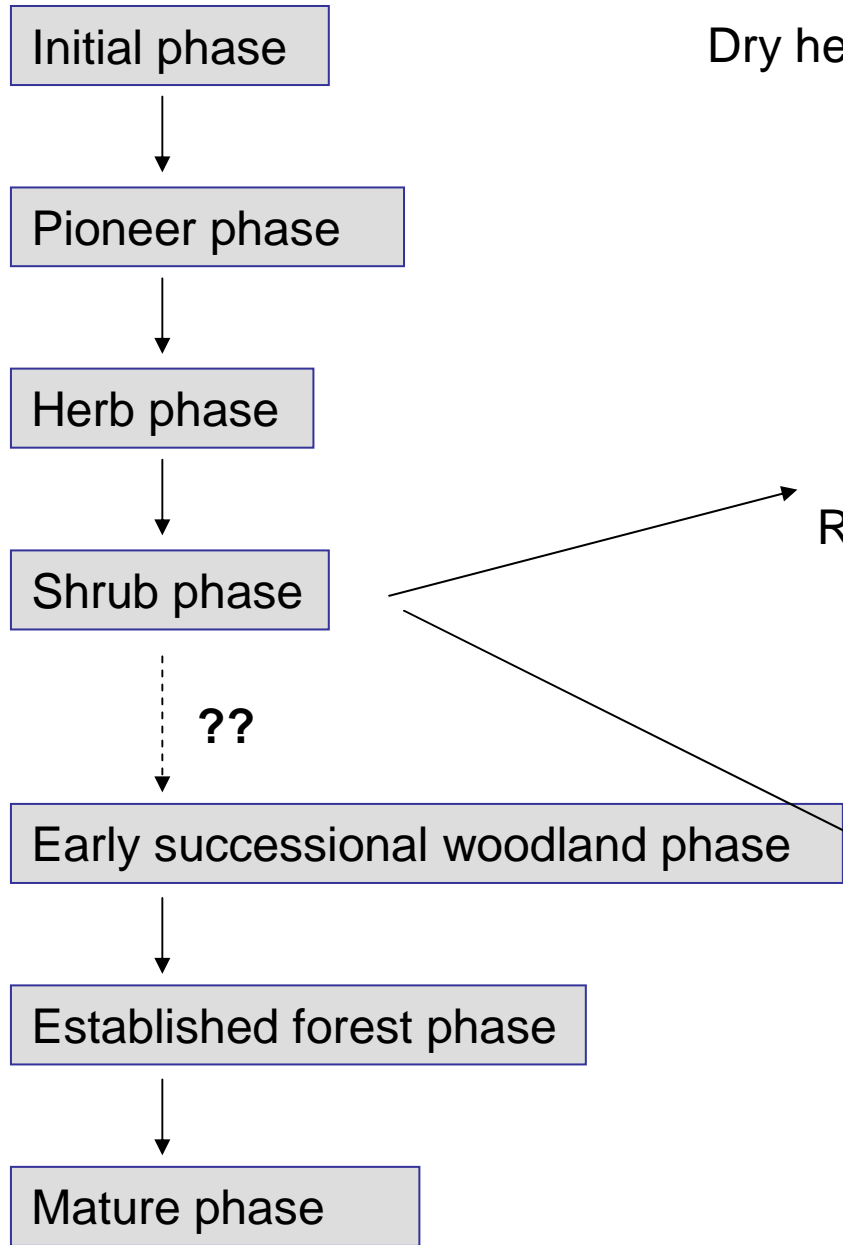


(40 years)

(> 40 years)



**“DRY” WOODLAND SERIE**



Dry herb phase



Shrub  
Rubus spp.

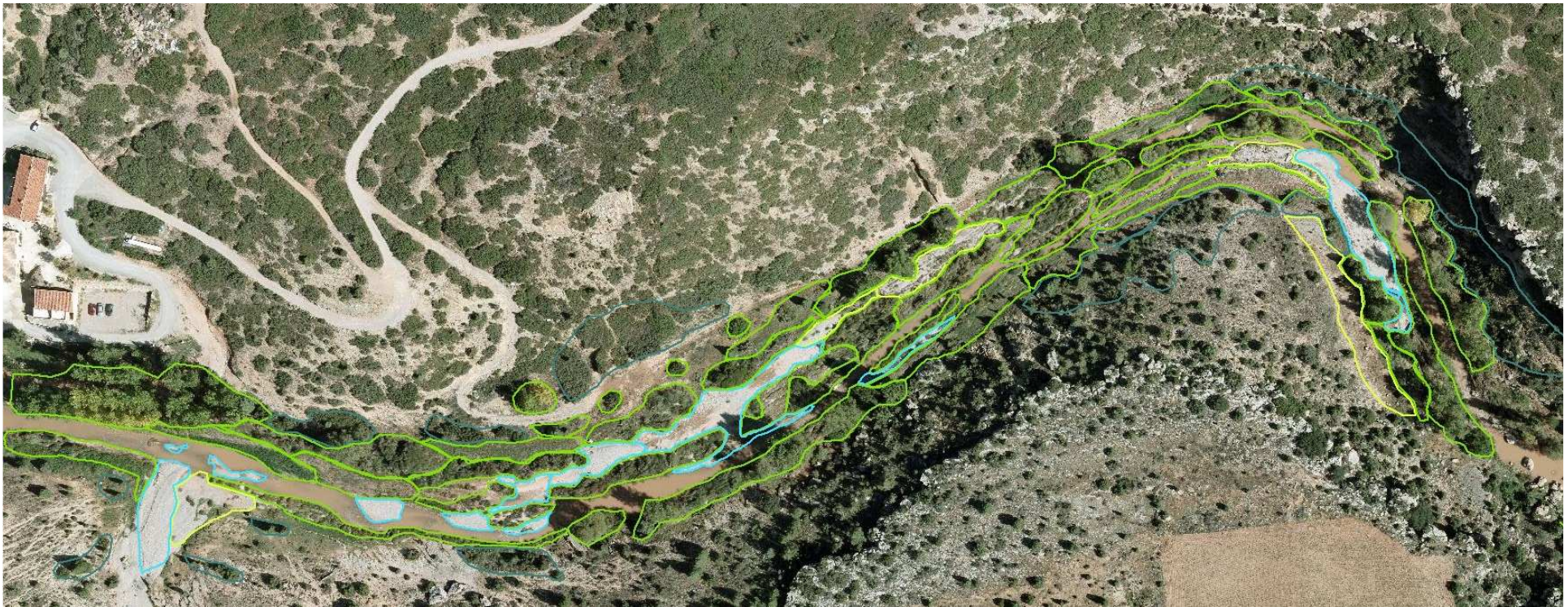


Shrub  
Nerium oleander



# Still to be done...

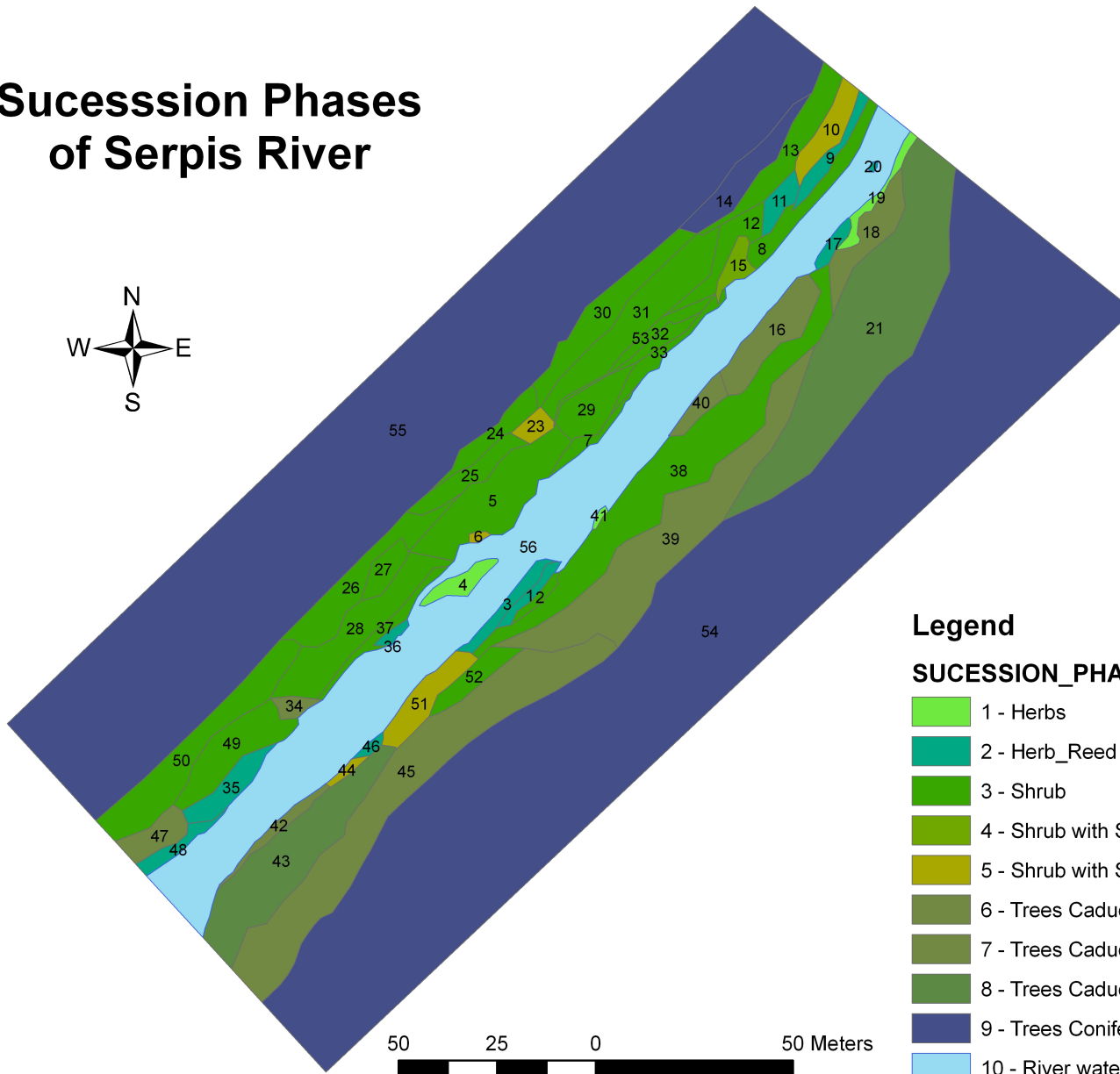
- Today? Grouping Serpis habitats into RIPFLOW succ. Phases
  - To complete sampling and habitat classification in Serpis
  - Sampling of reference sites and analysis in river Mijares
  - Mapping vegetation patches in Mijares
- } **May & June**







# Sucesssion Phases of Serpis River



## Legend

### SUCESSION\_PHASES

- 1 - Herbs
- 2 - Herb\_Reed phase
- 3 - Shrub
- 4 - Shrub with Salix (includes recruitment)
- 5 - Shrub with Salix
- 6 - Trees Caducifolius (includes recruitment)
- 7 - Trees Caducifolius
- 8 - Trees Caducifolius+Coniferous
- 9 - Trees Coniferous
- 10 - River water

